

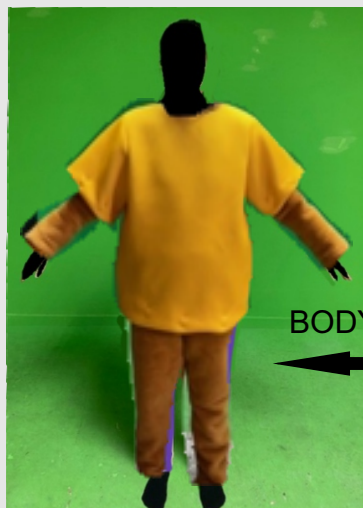
DRESSING INSTRUCTIONS



MUSGUMMI*mascotte*[®]

DRESSING INSTRUCTIONS

BASIC RULES



A) put on the suit by closing the rear lamp-

B) wear the T-shirt

BODY

1)

WARNINGS:

although not necessary it is recommended the use of a standard academic white or BLACK under the entire dress; will make the insertion of the pieces and greater general hygiene.



close zip



WE SUGGEST FOR GIRLS TO BIND I HAIR WITH LOW TAIL AND INSERT PREFERABLY A NET UNDER A WIG

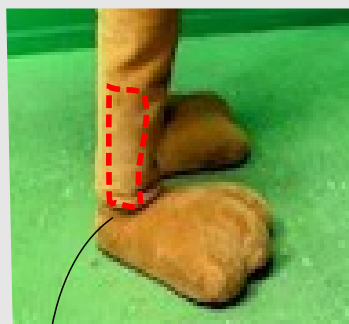


we suggest person H 1.65 / 1.75 MAX and size 44/46/48 MAX.
Body mounts sleeves with attached mittens pay attention and delicacy in wearing.

BODY

2)

wear the shoes paying attention to insert the foot (without shoe) inside of the accommodation slipper. RAISE YOUR SOCKS UP TO THE ANKLE



overlap the suit leg on the shoes in order to create optical continuity between shoes and legs.

suit LEG above



wear gloves, taking care to insert the "sleeve (B) under the sleeve as for shoes

3)



final result

HEAD

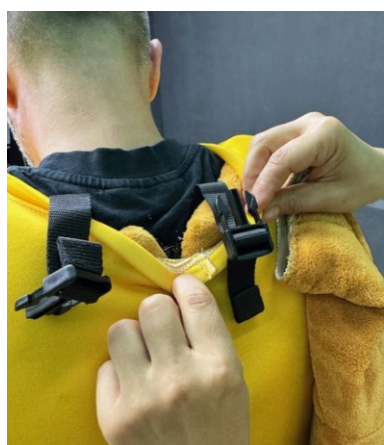


the head contains a helmet **D** with a lace under the chin; open the protective sleeve adjust the size and replace the sleeve

the head also has **CLIPS** to attach it to the body



E Once the head is worn, hook the large **CLIPS**. Pull the lower nylon strips, the ones in the body, like a backpack, The head will have to look **STRAIGHT** at the end.



SIZES and HEIGHTS

OPERATOR: 1.65/1.70 m height
size 44/48 shoes 39/42



Professional costumes are defined in the sizes based on the general proportions.

We remind you that the sizes and heights on the costumes are indicative; the proportions (lengths arms, neck legs, torso and especially head circumference) are always to be verified ad hoc by measuring the costumes to more subjects and choose the correct fit.

We produce the costumes , it's up to you to enter the **CORRECT** people.



We always recommend a ROAD MANAGER (companion) who controls the character.

STEPS:

- 1) wear **SUIT** and **Tshirt**
- 2) wear shoes and **Gloves**
- 3) insert head

WARNINGS AND CRITICALITIES:

It is advisable to take breaks and avoid too many neck movements.

Always use a sweat bandana over the hood

IMPORTANT:

- a) Respect the operator height
- b) Dress in a clean and dry place possibly use the bag to avoid soiling the fabric.
- c) Do not lean or rub the body
- d) clean eyes and do not squeeze them inside



If the suit has a fan, make sure it is in the on position (not in the 0 position) and adjust the flow up to a maximum of H.

Connect it to a power bank (5000/10000) not supplied and use the armrest to insert the power bank (use small power banks)

FAN into the head



armrest

usb cable



power bank



ATTENTION NOSE

ATTENTION

the nose is created to allow visibility and is equipped with a nose cover that serves to protect it.

The central part, where visibility occurs, is delicate. PLEASE BE CAREFUL:

- avoid blows (if it comes back just access from inside the head to make it come out again.
- Avoid scratching the red retina.
- Do not hit or crush the bag.